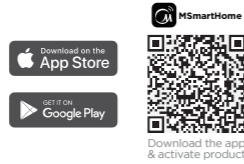


Connect your GAIA through MSmartHome One APP, Total Control

⚠ Make sure your phone is connected to WIFI/Wireless networks

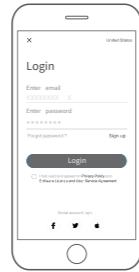
Step 1

Scan below QR code to download & install MSmartHome app



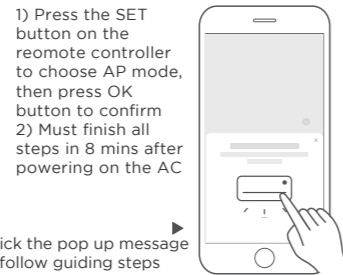
Step 2

Sign up for registration



Step 3

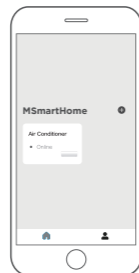
Set up the network configuration between the AC and your phone



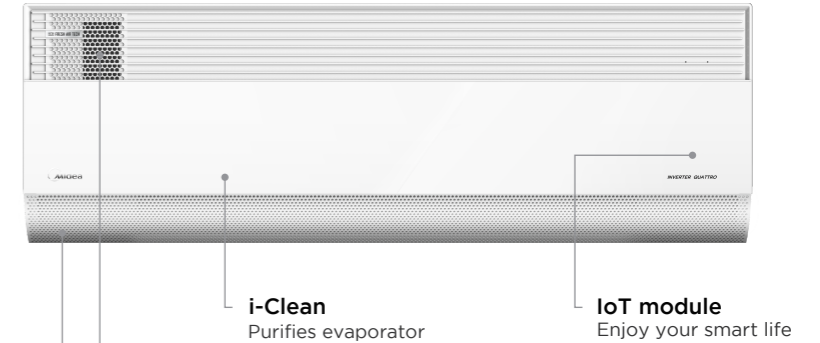
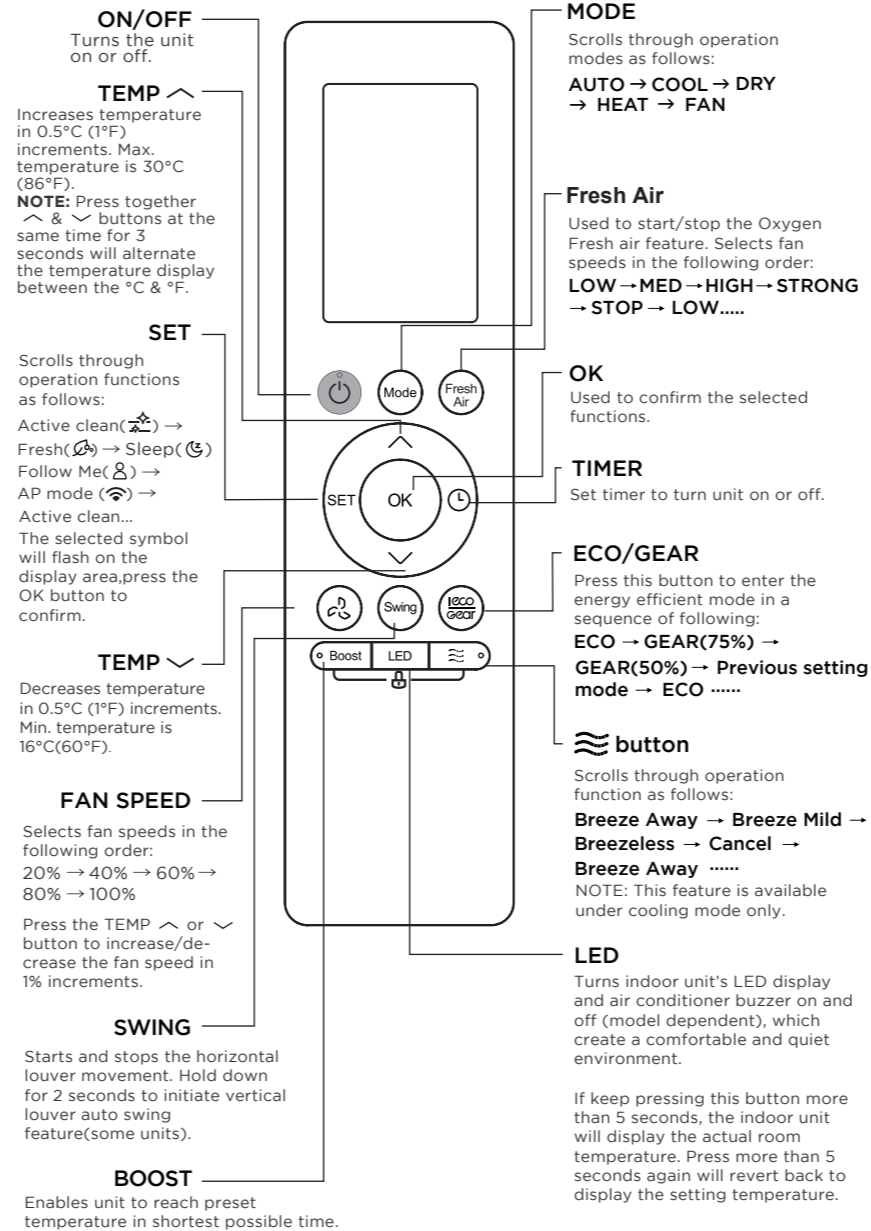
Click the pop up message & follow guiding steps

Step 4

Start the journey into nature



Buttons and Functions



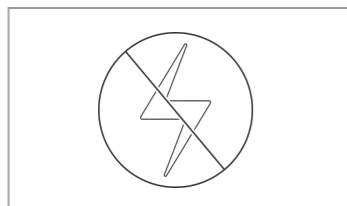
Breezeless technology
Avoid direct wind and adapt to all your needs in the most sensitive way

Competitive Fresh Air Volume

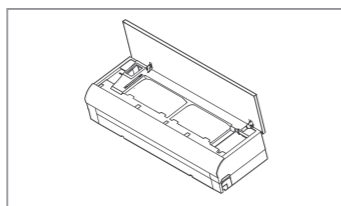


* The product is equipped with 30m³/h fresh air as standard, and the maximum quantity can reach 60m³/h after hole expansion. Whether the hole can be expanded shall be determined according to the actual situation of after-sales installation site evaluation. The actual fresh air volume is affected by the length and bending of the fresh air duct, which may deviate from the nominal fresh air volume.
* Air volume is tested by Midea laboratory under normal and reamed conditions. The actual use effect may deviate from the laboratory data due to different environments.

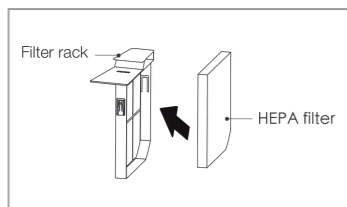
Easily replace a new HEPA filter



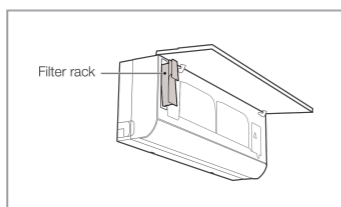
1. Cut the power



2. Open the AC panel



3. Take the HEPA filter and filter rack out of the air conditioner, to place a new HEPA filter



4. Reinsert the filter again and reposition the panel before power on

The recommended use time for HEPA filters is 2160 hours

Our MSmartHome App will intellectually remind user to replace a new filter every 600-hour, which is the recommended duration for better purification performance.



Digital User manual
16122000010534

Midea GAIA

Quick Guide

(此页无需印刷) CS018U-CA(Quick Start Guide)

16122000010534

技术要求:

- 1、印刷颜色为黑白印刷，封面logo黑色过UV油；
- 2、材料：200g哑粉纸表面过哑膜；
- 3、展开尺寸：360*200mm，折页成品尺寸：120*200mm；
- 4、红色线条不属于印刷内容；
- 5、折页方式见下图。

